

ROPEWALK

PECKHAM
PRYE

RUGBY

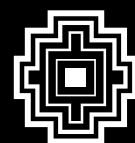
BERMONDSEY
HIGH ST.

HAY'S GALLERIA

BOROUGH MARKET

HIDDEN GEMS

UNEARTH YOUR LOCAL LONDON TREASURES



THE GUIDE TO **YOUR NEIGHBOURHOOD**

BERMONDSEY
HEIGHTS SE15

BERMONDSEY HEIGHTS + BEYOND

LOCAL GUIDE

BERMONDSEY HEIGHTS IS AN ICONIC NEW 26-STOREY DEVELOPMENT FEATURING 163 ONE, TWO AND THREE-BEDROOM APARTMENTS IN ZONE 2, SOUTH EAST LONDON. SET FOR COMPLETION IN SPRING 2025. SITUATED JUST A FIVE-MINUTE TRAIN RIDE FROM LONDON BRIDGE, RESIDENTS CAN EFFORTLESSLY ACCESS ALL THAT THE CAPITAL HAS TO OFFER.



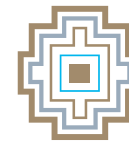
DID YOU KNOW?

By 1300, Bermondsey had become an established **market centre** with many traders setting up shop in Southwark Street and Tanner Street.

WELCOME TO **BERMONDSEY HEIGHTS**, WHERE URBAN LIVING MEETS VIBRANT **LOCAL CULTURE**. NESTLED IN THE HEART OF LONDON, BERMONDSEY BOASTS A RICH HISTORY AND A **THRIVING COMMUNITY**. EXPLORE THE BUSTLING MARKETS, ARTISANAL CAFÉS AND ECLECTIC SHOPS THAT DEFINE THE AREA. ENJOY SCENIC WALKS ALONG THE THAMES, DISCOVER **HIDDEN GEMS** IN HISTORIC STREETS AND EXPERIENCE THE DYNAMIC BLEND OF TRADITION AND MODERNITY. BERMONDSEY HEIGHTS OFFERS A UNIQUE AND **LIVELY ENVIRONMENT** FOR LOCALS AND GUESTS ALIKE.

THIS **LOCAL GUIDE** DELVES INTO THE **VIBRANT SURROUNDINGS** OF BERMONDSEY HEIGHTS, HIGHLIGHTING THE BEST THE AREA HAS TO OFFER. IT COVERS A WIDE ARRAY OF **LOCAL ATTRACTIONS**, AMENITIES, AND EXPERIENCES, PROVIDING BOTH RESIDENTS AND VISITORS WITH VALUABLE INSIGHTS INTO THE NEIGHBOURHOOD. **KEY FEATURES INCLUDE:**

ARTS AND CULTURE
RESTAURANTS & CAFÉS
BARS AND PUBS
HEALTH & WELL-BEING
WORKSPACE



BERMONDSEY
HEIGHTS SE15



KEY

TOPICS

BERMONDSEY HEIGHTS AND BEYOND	P2
CONTENTS	P5
MEETING THE NEIGHBOURS	P6 & P7
GETTING AROUND	P8
CLOSE TO HOME	P9
RIVER THAMES AND LONDON BRIDGE	P10 & P11
HAY'S GALLERIA, MORE LONDON AND TOWER BRIDGE	P12 & P3
PECKHAM AND DEPTFORD	P14 & P15
DULWICH VILLAGE AND GREENWICH	P16 & P17
LOCAL AREA MAP	P18 & P19
DIRECTORY	P20 & P21
BERMONDSEY HEIGHTS	P22 & P23

ENJOY DISCOVERING THE HIDDEN TREASURES OF THE **BERMONDSEY HEIGHTS** LOCAL AREA WITH OUR DETAILED GUIDE



DID YOU KNOW?

With its rooftop bars, quirky coffee shops and art galleries, **Bermondsey** has fast become one of **London's coolest neighbourhoods**.

MEETING

THE NEIGHBOURS

WITH A THRIVING LOCAL SCENE, **BERMONDSEY HEIGHTS** IS AN IDEAL PLACE TO BOTH **LIVE AND WORK**. EXPERIENCE A STRONG SENSE OF **COMMUNITY**, WHERE NEIGHBOURS BECOME **FRIENDS** AND LOCAL EVENTS BRING EVERYONE **TOGETHER**. BERMONDSEY HEIGHTS PROVIDES THE **PERFECT SETTING** FOR A FULFILLING LIFESTYLE WITH AN EXCEPTIONAL BLEND OF RESIDENTIAL COMFORT AND PROFESSIONAL **CONVENIENCE**.

BETH, BARISTA

COMPTOIR GOURMAND BAKERY
MALTBY STREET, LONDON SE1 3PB



"AS A BARISTA IN MALTBY STREET, I LOVE SERVING COFFEE IN THIS **ENERGETIC, VIBRANT COMMUNITY**. IT'S A JOY CONNECTING WITH LOCALS AND VISITORS ALIKE EVERY DAY."

JAMES, MANAGER

NONO CAFÉ
12 WEST LANE, LONDON SE16 4NY



"MANAGING A COFFEE SHOP IN BERMONDSEY IS **EXCITING**. THIS BUSY AND **CONNECTED AREA** BRINGS DIVERSE PEOPLE TOGETHER, CREATING A **GREAT ATMOSPHERE** I **LOVE** BEING PART OF."



KAT, GRAPHIC DESIGNER & CONTENT CREATOR

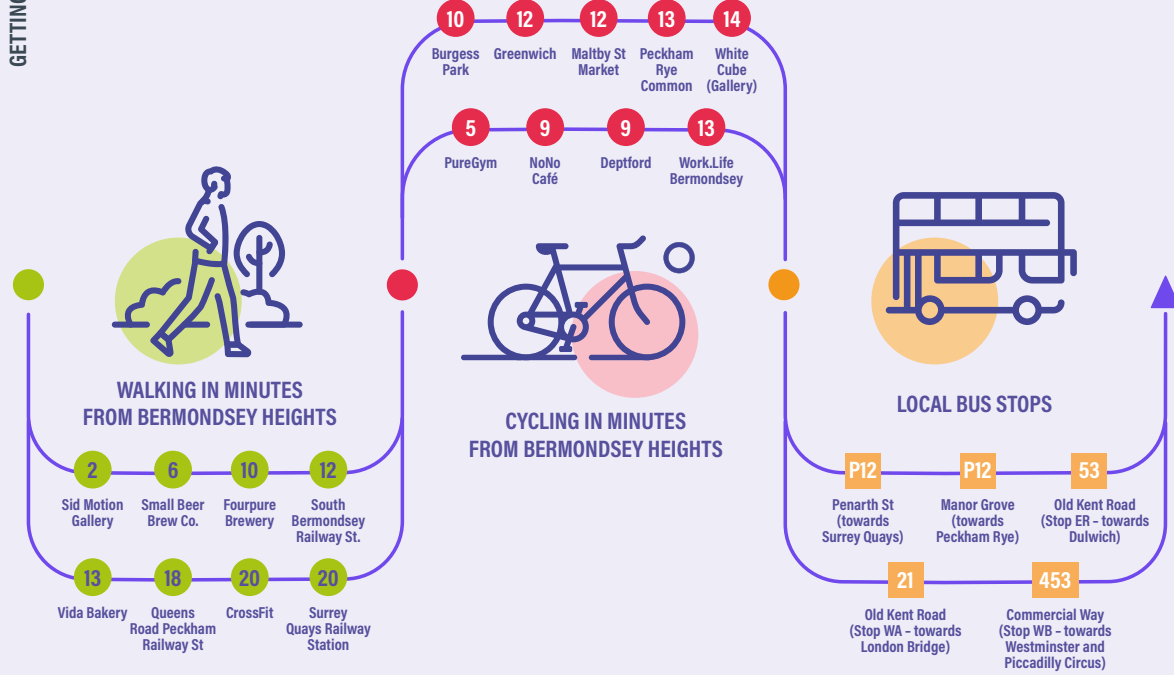
SMALL BEER BREW CO
70-72 VERNEY ROAD, LONDON SE16 3DH



"AS A GRAPHIC DESIGNER IN BERMONDSEY, I **THRIVE** IN THIS NEIGHBOURHOOD. IT IS ALSO **INSPIRING** TO COLLABORATE WITH **LOCAL PEOPLE** TOO AND FUEL MY ARTISTIC PASSION."



EXPLORE THE DETAILED
LOCAL AREA MAP ON P18 & P19



GETTING AROUND

BERMONDSEY HEIGHTS OFFERS EXCELLENT PEDESTRIAN CONNECTIONS, PLENTY OF CYCLING ROUTES AND EFFICIENT BUS LINKS. THESE FEATURES ENSURE SEAMLESS AND **CONVENIENT** TRAVEL OPTIONS FOR RESIDENTS, PROMOTING AN ACTIVE LIFESTYLE AND **EASY ACCESS** TO SURROUNDING AREAS. BERMONDSEY HEIGHTS IS DESIGNED TO SUPPORT A **CONNECTED** AND **SUSTAINABLE** URBAN LIVING EXPERIENCE IN THE **HEART OF SOUTH EAST LONDON**.

CLOSE TO HOME

BERMONDSEY HEIGHTS, SET IN A **PRIME LOCATION**, IS SURROUNDED BY A MULTITUDE OF RESTAURANTS, CAFÉS, BARS AND PUBS. THE AREA IS RICH IN ARTS AND CULTURE VENUES, PROMOTING VIBRANT COMMUNITY ENGAGEMENT. HEALTH AND WELL-BEING ESTABLISHMENTS ARE EASILY ACCESSIBLE AND NEARBY CO-WORKING SPACES PROVIDE CONVENIENT SETTINGS FOR PRODUCTIVITY AND NETWORKING, MAKING IT AN **IDEAL PLACE TO LIVE AND WORK**.



DID YOU KNOW?

Peek, Frean & Co. set up its factory in **Bermondsey** in 1857, earning the area the nickname of **'biscuit town'**.



ARTS AND CULTURE

SID MOTION GALLERY

A contemporary art gallery with high ceilings and natural light, able to showcase a range of new and vibrant artists.

WHITE CUBE

A huge space with plenty of rooms housing different exhibitions that are frequently immersive and dramatic.

RESTAURANTS AND CAFÉS

VIDA BAKERY

A bakery just around the corner serving small or large cakes and coffee, all vegan and gluten free. Sit in or order to take it home.

BON VINO MALTBY

A place to enjoy authentic Italian pizza with a range of wine chosen by the in house sommelier in an atmospheric location.

BARS AND PUBS

FOURPURE BREWERY

A craft brewery with lively ambience and a diverse beer selection, including brewery tours and delicious pizza.

THE KERNEL BREWERY

Located in a traditional railway arch, a taproom which is simple but charming with a selection of 16 beers on tap.

SEE **DIRECTORY ON P20 & 21** FOR MORE INFORMATION



HEALTH AND WELL-BEING

CROSSFIT BERMONDSEY

A warm and welcoming fitness community offering group sessions and personal training helping to better your lifestyle.

MILO AND THE BULL

An inclusive and balanced workout, providing you with a holistic approach to your wellbeing.

WORKSPACE

THE BISCUIT FACTORY

An iconic factory building restored into a business centre, offices and studio workspaces including an on-site café and gym.

WORK.LIFE BERMONDSEY

A positive environment with comfortable areas and a safe bike storage for your short commute to this workspace.



EXPLORE THE DETAILED
LOCAL AREA MAP ON P18 & P19



TRACK

THE RIVER THAMES

THE **RIVER THAMES** IS A DEFINING FEATURE OF LONDON, WINDING THROUGH THE HEART OF THE CITY AND PROVIDING A PICTURESQUE BACKDROP TO MANY OF ITS MOST **ICONIC LANDMARKS**. ONE SUCH LANDMARK IS **LONDON BRIDGE**, A HISTORICAL AND ARCHITECTURAL MARVEL THAT HAS STOOD IN VARIOUS FORMS SINCE ROMAN TIMES. THE AREA SURROUNDING LONDON BRIDGE IS A **VIBRANT AND DYNAMIC** PART OF THE CITY, OFFERING AN INCREDIBLE ARRAY OF **ATTRACTIONS** AND **AMENITIES** THAT CATER TO DIVERSE TASTES AND INTERESTS. NEARBY, THE WORLD-RENOWNED **BOROUGH MARKET** HAS SEEN AN EXPLOSION OF EATERIES, MAKING THE AREA A TRUE **FOOD LOVERS' PARADISE**.



DID YOU KNOW?

London Bridge was actually **the sole crossing of the Thames** until the construction of Putney Bridge in 1729.



ARTS AND CULTURE

The London Bridge area boasts a vibrant arts and culture scene, featuring renowned venues such as the Bankside Gallery, the Bridge Theatre and the Southbank Centre, awarding diverse artistic experiences and enriching cultural activities.

TATE MODERN

A famous art gallery in the old Bankside power station featuring expansive floors of artists work and immersive exhibits.

BANKSIDE GALLERY

A modern art gallery situated on the bank of the River Thames, a variety of artists work with watercolours and prints to buy.

SEE DIRECTORY ON P20 & 21
FOR MORE INFORMATION



RESTAURANTS AND CAFÉS

This area offers an eclectic mix of restaurants and cafés, from gourmet dining at The Shard to charming riverside spots, providing a delightful culinary experience for all.

CHAPTER 72

A hidden gem, owned by a couple serving coffee and cocktails. A fun atmosphere, open all week and in the evenings for events.

CASA DO FRANGO

This trendy restaurant transports you to the heart of Portugal with its beautiful interior and warm hospitality.

BARS AND PUBS

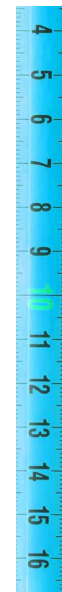
The area features a lively array of bars and pubs, from historic establishments to trendy rooftop spots, a vibrant nightlife and stunning views.

VINEGAR YARD

A perfect location for a drink or two in the sun, with an array of cuisines to choose from and majestic views of The Shard.

THE WOOLPACK

A stylish London pub offering an extensive menu of food and drink complete with an unmissable beer garden.



HEALTH AND WELL-BEING

The area is home to numerous health and well-being venues, promoting a balanced and healthy lifestyle for everyone.

MOROCCO BOUND

A unique and ever-evolving space, a bookshop, café, co-working space by day & bar and events space by night.

CLUB PILATES

An amazing studio with high quality equipment. Professional instructors welcome beginners or intermediates to the club.

WORKSPACE

Dynamic spaces offering modern facilities and collaborative environments, ideal for those seeking productivity and creativity in a prime location.

UNCOMMON BOROUGH

An office work space with a relaxing ambience as well as an in-house café and showers if you want to run/cycle in.

COWORK BOROUGH

A shared workspace for anyone with dedicated desk space, fast broadband wifi and high-spec meeting rooms.

EXPLORE THE DETAILED
LOCAL AREA MAP ON P18 & P19



ICONIC

RIVERFRONT GEMS

BERMONDSEY HEIGHTS IS IN CLOSE PROXIMITY TO HAY'S GALLERIA, AN ARCHITECTURAL MARVEL FEATURING CONTEMPORARY AND FLEXIBLE WORKSPACES. NEARBY, MORE LONDON IS A VIBRANT DESTINATION BRIMMING WITH FOOD, CULTURE AND EVENTS. TOWER BRIDGE, THE UK'S MOST ICONIC BRIDGE, ADDS HISTORIC CHARM, ENRICHING THE COMMUNITY WITH ITS STORIED PAST.



DID YOU KNOW?

Hay's Wharf was the former name of today's **Hay's Galleria** and during the 19th century it used to be one of the main delivery points of goods in the capital, including the very popular tea. The importance of Hay's to London's trade industry led to it being nicknamed 'the Larder of London'



ARTS AND CULTURE

Bermondsey Heights is ideally located near the Bridge Theatre, renowned for new shows and classics and the historic HMS Belfast, a Royal Navy vessel which served in WWII.

BRIDGE THEATRE

The Bridge Theatre sits next to Tower Bridge showing new and classic productions, perfect for an evening of entertainment.

HMS BELFAST

A cruiser built for the Royal Navy. She is now permanently moored as a museum ship on the River Thames.

SEE **DIRECTORY ON P20 & 21**
FOR MORE INFORMATION

RESTAURANTS AND CAFÉS

The area boasts a vibrant array of cafés and restaurants, offering diverse cuisines and cosy atmospheres, perfect for enjoying delightful meals or casual coffee breaks by the scenic riverside.

1751 DISTILLERY BAR & KITCHEN

A gin distillery and restaurant, with a contemporary atmosphere and a botanical interior serving food and drink all day.

WHITE MULBERRIES

A café in Hay's Galleria delivering freshly brewed coffee, delicious pastries and all-day brunch in a relaxing spot.

BARS AND PUBS

Around Tower Bridge riverside, and More London, there's a wide selection of bars and pubs. Enjoy a variety of drinks and lively ambiances.

THE VAULT 1894

A hidden gem. A small intimate bar with views of the River Thames and Tower Bridge, serving beers, wines and classic cocktails.

THE HORNIMAN AT HAYS

A traditional English pub, enjoy classic pub food, real ales and premium gins right by the river with views of London.

HEALTH AND WELL-BEING

Around this area there is a diverse range of health and fitness venues, offering modern gyms, yoga studios, and wellness centres.

MORE YOGA

A fantastic space for yoga and personal growth. The variety of classes for all abilities are relaxing and friendly.

THIRD SPACE

A luxury fitness and health club with high end facilities including a 3-lane pool, sauna and steam room.

WORKSPACE

In this neighbourhood you can discover various co-working spaces offering modern facilities, collaborative environments and stunning views.

REGUS

An extensive space of modern, flexible and serviced offices for personal, co-working and meeting rooms.

WEWORK

A fantastic location with views of Tower Bridge whilst working, all amenities and friendly staff to assist you.



EXPLORE THE DETAILED
LOCAL AREA MAP ON P18 & P19



DISCOVER

THE VIBE

BERMONDSEY HEIGHTS IS JUST A STONE'S THROW FROM THE VIBRANT NEIGHBOURHOODS OF PECKHAM AND DEPTFORD. THESE AREAS ARE RENOWNED FOR THEIR EXCITING ART SCENES, DIVERSE FOOD SPOTS, WONDERFUL CAFÉS AND UNIQUE INDEPENDENT SHOPS, MAKING THEM SOME OF THE COOLEST PLACES IN LONDON.



DID YOU KNOW?

Deptford Dockyard – which was established in 1513 – was the first Royal Navy Dockyard and was visited by Queen Elizabeth I in 1581 where she knighted Francis Drake.

ARTS AND CULTURE

Peckham's hip cinema screens the latest blockbusters and 3D films with cheap tickets all day. Nearby, Deptford Does Art offers a cool indie gallery and art shop.

PECKHAMPLEX (PECKHAM)

An enjoyable cinema with an immersive viewing experience, diverse selection of films and affordable ticket prices.

DEPTFORD DOES ART

An art gallery around the corner of the hustle and bustle of the city, with a shop and venue for creative events from talented, local artists.

RESTAURANTS AND CAFÉS

Cool international eateries and hipster coffee shops, offering diverse culinary delights and trendy spots to relax, make these neighbourhoods lively and must-visit destinations.

TACA TACOS (DEPTFORD)

A popular location in the railway arch for delicious Mexican food, sit outside surrounded by bars in a sociable location.

NOLA COFFEE (PECKHAM)

A cool coffee shop with contemporary interior, a lovely ambience, delicious coffee and plenty of pastries to choose from.

BARS AND PUBS

Peckham and Deptford feature hip wine bars and pubs, perfect for enjoying stylish evenings in vibrant, trendy surroundings.

SALT (DEPTFORD)

A brewery serving their own beer and pizza. A sun trap in the afternoon with a lively atmosphere.

80-20 WINES (PECKHAM)

A Georgian restaurant and wine bar offering a curated wine selection and an array of traditional Georgian dishes.

HEALTH AND WELL-BEING

Around this area there is a variety of health and well-being venues, providing residents with excellent options for fitness, relaxation and holistic wellness, ensuring a great work-life balance.

THE YARD (PECKHAM)

A destination for the weekend, to discover, eat, drink and shop where you'll find the very best chefs, creators and curators.

FOREST (DEPTFORD)

A gorgeous little flower and plant boutique in the railway arches to find yourself in plant heaven.

WORKSPACE

Peckham and Deptford feature numerous collaborative spaces, with flexible spaces for professionals and entrepreneurs alike.

WORKSPACE AT MARKET (PECKHAM)

A professional workspace with three floors of beautiful work environments designed to suit your different moods.

YOUR SPACE (DEPTFORD)

A variety of co-working solutions from a flexible hot-desking membership to naturally lit meeting rooms.

SEE DIRECTORY ON P20 & 21
FOR MORE INFORMATION



EXPLORE THE DETAILED
LOCAL AREA MAP ON P18 & P19



VILLAGES WITHIN A CITY

BERMONDSEY HEIGHTS IS ALSO CLOSE TO **GREENWICH**, RENOWNED FOR ITS PIVOTAL ROLE IN **MARITIME HISTORY** AND AS THE BIRTHPLACE OF THE GREENWICH PRIME MERIDIAN AND GREENWICH MEAN TIME. NEARBY **DULWICH VILLAGE** COMPLEMENTS WITH ITS ACCLAIMED ART GALLERY, ESTEEMED SCHOOLS, SERENE PARKLANDS AND A **VIBRANT HIGH STREET** ADORNED WITH **CHARMING SHOPS** AND INVITING PUBS.



ARTS AND CULTURE

Explore Greenwich's Royal Observatory, the home of Greenwich Mean Time and visit Dulwich Picture Gallery with its collection of Baroque masterpieces.

ROYAL OBSERVATORY (GREENWICH)

A place to visit in the centre of the beautiful Greenwich Park, a panoramic view of London, awe-inspiring science and history.

DULWICH PICTURE GALLERY (DULWICH VILLAGE)

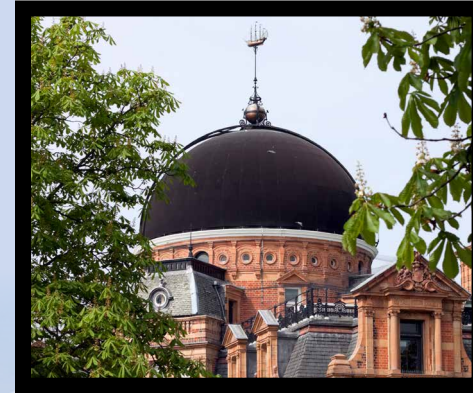
A vibrant cultural hub with peaceful surroundings, historic collections, special exhibitions and one-off events.

SEE **DIRECTORY** ON **P20 & 21**
FOR MORE INFORMATION



DID YOU KNOW?

The **Royal Observatory Greenwich** has an amazing clock collection. The list of historic clocks — many of which revolutionised the way we record and measure of time across different industries — is lengthy.



RESTAURANTS AND CAFÉS

Greenwich Market offers diverse goods amidst historic charm, while Dulwich Village beckons with independent eateries, blending local flavour and community ambience in London's cultural tapestry.

GREENWICH MARKET (GREENWICH)

One of London's longest running markets, explore beloved local shops, a taste of different cuisines & bakeries.

SPINACH (DULWICH VILLAGE)

An informal, welcoming and lively restaurant for coffee, brunch, cocktails and dinner with al fresco outdoor seating.

BARS AND PUBS

Greenwich boasts historic pubs alongside trendy cocktail and wine bars, while Dulwich Village offers independent eateries, mixing old-world charm with contemporary dining.

THE BISHOP (DULWICH VILLAGE)

A beautiful traditional British pub on the corner serving quality, local cask ales, continental beers and delicious dishes.

THE TRAFALGAR TAVERN (GREENWICH)

An inviting atmosphere, picturesque setting and outdoor beer garden with panoramic views of the River Thames.

HEALTH AND WELL-BEING

Dulwich and Greenwich have a diverse range of health and well-being venues, from fitness centres and spas to holistic retreats.

MERIDIAN FITNESS GYM AND SPA (GREENWICH)

A health club, gym and spa offering personal training programs and classes with a supportive community.

FITFOR (DULWICH VILLAGE)

A gym that has everything: all the equipment, classes, pilates, personal training programmes and massages.

WORKSPACE

Professional workspaces with modern offices, high-speed wifi and a touch of wellness. All with in-house cafés offering coffee and freshly baked pastries.

WORKSPACE FUEL TANK (GREENWICH)

A renovated former factory now transformed into a business centre with smart spaces and an engaging community.

ORU SPACE (DULWICH VILLAGE)

A vibrant, sustainable co-working and well-being space with desks, yoga and pilates classes and a café.





KEY

-  MEETING THE NEIGHBOURS
-  ARTS AND CULTURE
-  RESTAURANTS AND CAFÉS
-  BARS AND PUBS
-  HEALTH AND WELL-BEING
-  WORKSPACE

Average travel times are approximate (without traffic). Sources: tfl.gov.uk and Maps.google.com. Map not to scale.

Bermondsey

spoko

stay curious

BAGS OF BROK

DIRECTORY

TAKE YOUR TIME TO BROWSE ALL OF THE EXCITING VENUES THAT ARE MENTIONED IN THIS GUIDE. WHY NOT EXPLORE THE LOCAL AREA MAP ON PAGES 18 & 19 TO DISCOVER HOW CLOSE EVERYTHING IS TO YOUR NEW HOME AT BERMONDSEY HEIGHTS.

MEETING THE NEIGHBOURS

1 **SMALL BEER BREW CO**
70-72 Verney Rd, London SE16 3DH
www.theoriginalsmallbeer.com

2 **NONO COFFEE**
12 West Ln, London SE16 4NY
www.nonogoods.com

3 **COMPTOIR GOURMAND BAKERY MALTBY**
Maltby St, London SE1 3PB
www.comptoirgourmand.co.uk

FOR FURTHER DETAILS SEE P6 & 7

CLOSE TO HOME

FROM BERMONDSEY HEIGHTS
🚲 9 MINS*

4 **SID MOTION GALLERY**
Unit 24a, The Penarth Centre Hatcham Rd, London SE15 1TR
www.sidmotiongallery.co.uk

5 **WHITE CUBE**
144-152, Bermondsey St London SE1 3TQ
www.whitecube.com

6 **VIDA BAKERY**
Unit 31, 18 Verney Way, Karma Kitchen, London SE16 3DH
www.vidabakery.co.uk

7 **BON VINO MALTBY**
Ropewalk Arch 49 London SE1 3PA
www.bon-vino.com

8 **FOREPURE BREWERY**
25, Bermondsey Trading Estate Rotherhithe New Rd London SE16 3LL
www.fourpure.com

9 **THE KERNEL BREWERY**
Arch 11, Dockley Road Industrial Estate, Dockley Rd London SE16 3SF
www.thekernelbrewery.com

10 **CROSSFIT BERMONDSEY**
183-187 Southwark Park Rd London SE16 3TX
www.crossfitbermondsey.com

11 **MILO AND THE BULL**
168-170 Bermondsey St London SE1 3TQ
www.miloandthebull.com

12 **THE BISCUIT FACTORY**
The Biscuit Factory 100 Drummond Rd London SE16 4DG
www.workspace.co.uk

13 **WORK.LIFE BERMONDSEY**
5-7 Tanner St, London SE1 3LE
www.work.life

FOR FURTHER DETAILS SEE P9

RIVER THAMES & LONDON BRIDGE

FROM BERMONDSEY HEIGHTS
🚶 10 MINS & 🚲 5 MINS*

14 **TATE MODERN**
Bankside, London SE1 9TG
www.tate.org.uk/visit/tate-modern

15 **BANKSIDE GALLERY**
48 Hopton St, London SE1 9JB
www.banksidegallery.com

16 **CHAPTER 72**
72 Bermondsey St London SE1 3UD
www.chapter-72.com

17 **CASA DO FRANGO**
32 Southwark St London SE1 1TU
www.casadofrango.co.uk

18 **VINEGAR YARDS**
72-82 St Thomas St London SE1 3QX
www.vinegaryard.london

19 **THE WOOLPACK**
98 Bermondsey St London SE1 3UB
www.woolpackbar.com

20 **MOROCCO BOUND**
1A Morocco St London SE1 3HB
www.moroccobound.co.uk

21 **CLUB PILATES BANKSIDE**
Unit 24, 20 Great Guildford St Bankside, London SE1 6FD
www.clubpilates.uk

22 **UNCOMMON BOROUGH**
1 Long Ln, London SE1 4PG
www.uncommon.co.uk

23 **COWORK BOROUGH**
109 Borough High St London SE1 1NL
www.co-work.co

FOR FURTHER DETAILS SEE P10 & 11

HAY'S GALLERIA, MORE LONDON & TOWER BRIDGE

FROM BERMONDSEY HEIGHTS
🚶 10 MINS, 🚲 5 MINS & 🚶 11 MINS*

24 **BRIDGE THEATRE**
3 Potters Fields Park London SE1 2SG
www.bridgetheatre.co.uk

25 **HMS BELFAST**
The Queen's Walk London SE1 2JH
www.iwm.org.uk

26 **1751 DISTILLERY BAR & KITCHEN**
5 More London Pl, Tooley St London SE1 2BY
www.1751.co.uk

27 **WHITE MULBERRIES**
Unit 6, Hay's Galleria Tooley St, London SE1 2HD
www.whitemulberries.com

28 **THE VAULT 1894**
Tower Bridge, Shad Thames London SE1 2UP
www.towerbridgevault.com

29 **THE HORNIMAN AT HAYS**
Unit 26, Hay's Galleria Greater, London SE1 2HD
www.nicholsonspubs.co.uk

30 **MORE YOGA**
7 Tower Bridge, Horselydown Ln, London SE1 2LN
www.moreyoga.co.uk

31 **THIRD SPACE**
2b More London Pl London SE1 2AP
www.thirdspace.london

32 **REGUS**
3 More London Pl London SE1 2RE
www.regus.com

33 **WEWORK**
109 Borough High St London SE1 1NL
www.co-work.co

FOR FURTHER DETAILS SEE P12 & 13

PECKHAM & DEPTFORD

FROM BERMONDSEY HEIGHTS
PECKHAM 🚶 15 MINS*

DEPTFORD 🚶 10 MINS & 🚲 11 MINS*

34 **PECKHAMPLEX**
95A Rye Ln, London SE15 4ST
www.peckhamplex.london

35 **DEPTFORD DOES ART**
28 Deptford High St London SE8 4AF
www.deptforddoesart.com

36 **TACA TACOS**
Deptford Market Yard London SE8 4BX
www.tacatacos.co.uk

37 **NOLA COFFEE**
224 Rye Ln, London SE15 4NL
www.nolacoffee.co.uk

38 **SALT**
Unit 2, St Paul's House 3 Market Yard, London SE8 4BX
www.saltbeerfactory.co.uk

39 **80-20 WINES**
56 Peckham Rye, London SE15 4JR
www.80-20wines.com

40 **THE YARD**
Unit 1, 133 Copeland Rd London SE15 3SN
www.theyardpeckham.com

41 **FOREST**
Arch 133, Deptford Railway St Deptford High St London SE8 4NS
www.forest.london

42 **WORKSPACE AT MARKET**
133a Rye Ln, London SE15 4BQ
www.marketpeckham.com

43 **YOUR SPACE**
The Stephen Lawrence Centre 39 Brookmill Rd London SE8 4HU
www.blueprintforall.org

FOR FURTHER DETAILS SEE P14 & 15

DULWICH VILLAGE & GREENWICH

FROM BERMONDSEY HEIGHTS
DULWICH VILLAGE 🚶 10 MINS, 🚲 9 MINS & 🚶 8 MINS*

GREENWICH 🚶 39 MINS*

44 **ROYAL OBSERVATORY**
Blackheath Ave London SE10 8XJ
www.rmg.co.uk

45 **DULWICH PICTURE GALLERY**
Gallery Rd, London SE21 7AD
www.dulwichpicturegallery.org.uk

46 **GREENWICH MARKET**
5B Greenwich Market London SE10 9HZ
www.greenwichmarket.london

47 **SPINACH**
161 Lordship Ln London SE22 8HD
www.spinach.london

48 **THE BISHOP**
25 Lordship Ln London SE22 8EW
www.thebishopeastdulwich.com

49 **THE TRAFALGER TAVERN**
Park Row, London SE10 9NW
www.trafalgartavern.co.uk

50 **MERIDIAN FITNESS**
38 Creek Rd, London SE8 3FN
www.meridian-fitness.co.uk

51 **FITFOR**
116 Lordship Ln London SE22 8HD
www.fitforgym.co.uk

52 **FUEL TANK**
Fuel Tank, 8-12 Creekside London SE8 3DX
www.marketpeckham.com

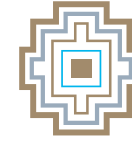
53 **ORU DULWICH**
20 - 22 Lordship Ln London SE22 8HN
www.oruspace.co

FOR FURTHER DETAILS SEE P16 & 17

*Average travel times are approximate (without traffic). Sources: tfl.gov.uk and Maps.google.com.



REACH NEW HEIGHTS



BERMONDSEY
HEIGHTS SE15

BERMONDSEY HEIGHTS STANDS AS A LANDMARK DEVELOPMENT READY FOR MOVE-IN FROM **SPRING 2025**, ITS **PRIME LOCATION** JUST A FIVE-MINUTE TRAIN RIDE FROM LONDON BRIDGE ENSURES UNPARALLELED ACCESS TO THE **HEART OF THE CAPITAL**. RESIDENTS WILL ENJOY A **VIBRANT NEIGHBOURHOOD** RICH IN WORLD-CLASS SHOPPING, NIGHTLIFE, SCENIC PARKS, ENTICING DINING OPTIONS, TOP-RATED SCHOOLS AND ABUNDANT CULTURAL AND LEISURE ATTRACTIONS.

BERMONDSEY HEIGHTS, THE PERFECT URBAN SANCTUARY

TO FIND OUT MORE:

0330 057 6666

bermondseyheights@barratlondon.com

www.barratlondon.com



BARRATT
— LONDON —

All information in this document is correct to the best of our knowledge at the time of issue July 2024. Calls to 03 numbers are charged at the same rate as dialling an 01 or 02 number. If your fixed line or mobile service has inclusive minutes to 01/02 numbers, then calls to 03 are counted as part of this inclusive call volume. Non-BT customers and mobile phone users should contact their service providers for information about the cost of calls.

DULWICH

DEPTFORD

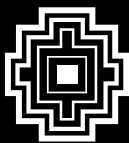


TOWER BRIDGE

LONDON
BRIDGE

GREENWICH

BARRATTLONDON.COM



BERMONDSEY
HEIGHTS SE15

BARRATT
— LONDON —